

# XiLog+

## Data Logger with GPRS + SMS

**XiLog+ series is a new range of remote data loggers available from Primayer. Every logger can be programmed for GPRS or SMS communications. It is available in single to nine channel models for use with a wide variety of sensors for monitoring water networks.**

### Features

- One, two, three and nine channel models
- High performance state-of-the-art below ground antenna
- Data transmission down to every 15 minutes (needs external power)
- Contact the logger as required
- Profile alarms with separately defined high and low profiles
- Wide range of sensors and high accuracy
- Powered for up to 5 years (depends upon configuration) + external battery and mains powered options
- Robust and waterproof to IP68
- SIM easily fitted on-site

### Data Transfer

All loggers may be configured to use GPRS or SMS remote communications for periodic reporting. Transmission period can be set from 15 minutes to 24 hours. The state-of-the-art antenna enables XiLog+ to operate from below ground in most locations. In areas of poor GSM/GPRS coverage an external antenna option is available.

### Logging

Flexible logging memory and configuration;

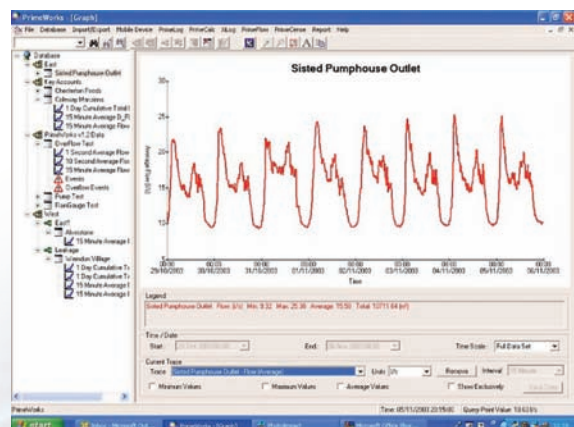
- Memory size; 1 Gbyte
- Measurement interval; 1 second - 24 hour
- Logs at different intervals on same input
- Logs daily minimum, maximum and totals
- Event logging

*Data reporting,  
graphing,  
database and  
export*



### Applications

- Flow - district and zone monitoring, leakage detection, consumption monitoring
- Network modelling
- Pressure monitoring
- PRV performance
- Reservoir / bore-hole depth
- Level / flow conversion on open channel
- Rainfall
- Overflow detection



technology for network management and leakage control

Primayer

Models	1F	1P	2	2i	3i	9i
Bi-directional flow channels - uni-directional flow channels in ()	1(2)	-	1(2)	1(2)	1(2)	2(4)
Analogue channels	-	-	1	-	-	4 x Voltage, 3 x mA
Internal pressure channels	-	1	-	1	2	-

## Flow

The flow input can log two uni-directional flows or one bi-directional flow. Also, both outputs from combination meters can be logged on one logger input channel. Existing meter index value can be entered at start of logging. Operation with, but not limited to, the following flowmeters:

Mechanical Meters	Pulse Unit Type
Elster	LRP, HRP, PR6, PR7, PSM
Sensus	R02.2, RD01, OPTO06, OD07
Actaris	Cyble 3-wire, Cyble 5-wire

## Electro-Magnetic Meters

ABB, Khrono, Siemens, Isoil, E+H

## Pressure/Depth/Analogue

Accuracy to  $\pm 0.1\%$  (of full scale). The offset of the transducer is corrected by the *Auto Zero* facility.

XiLog 1P, 2i 3i have internal transducers.

XiLog 2 accepts a range of electrical inputs or external pressure or depth transducers for monitoring weirs, reservoirs, and boreholes.

Depth Transducers	0 - 0.35, 0 - 1 Bar (and above)
Pressure Transducers	0 - 1 to 0 - 25 Bar (and above)
Current Inputs	0 - 10, 4 - 20 mA
Voltage Inputs	0 - 1, 0 - 5, 0 - 10 V

XiLog 9 has multiple digital, voltage and current inputs for flexible use in multiple applications.



## Events

- Rainfall - 0.1, 0.2, 0.5 mm/tip
- Overflow - time/period of tank or reservoir overflow

## Alarms

Alarm to PC or mobile phone, features includes:

- Alarm exceeding threshold (+ deadband)
- Profile alarms (high/low profiles may be defined independently)
- Alarm on change-of-state



## Communications

- Modem quad-band (850/900/1800/1900MHz)
- Below ground antenna or external antenna option
- Synchronise to GSM network (optional)
- GPRS to FTP using XiLog Message Service (XMS) or to end user FTP server
- SMS using XiLog Message Service (XMS) or direct to end user modem
- High speed local USB communications

## Part Number

Xilog+ 1F	NXG 201
Xilog+ 1P	NXG 202
Xilog+ 2	NXG 203
Xilog+ 2i	NXG 204
Xilog+ 3i	NXG 205
Xilog+ 9	NXG 301



## Primayer Limited

Primayer House, Parklands Business Park  
Denmead, Hampshire PO7 6XP, United Kingdom  
T +44 (0)2392 252228 F +44 (0)2392 252235  
E sales@primayer.com  
www.primayer.com



Information in this document is subject to change without notice.